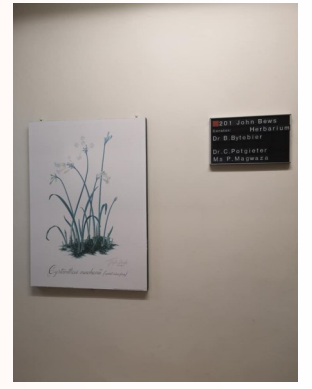




Communication from the NSCF Hub

In this issue:

- Update on Institutional visits
- Staying connected
- Some interesting reading
- Specimen Imaging Contracts



The NSCF Co-ordinating Hub team has been visiting all the participating institutions over the last few weeks. We are very grateful to all the managers for arranging the meetings at their institutions, and to all the staff who have participated in these meetings and contributed to the discussions.

We have realised how important this face-to-face communication is, and how we need to understand the challenges and concerns and hopes of everyone. It has become even more obvious to us just how different the institutions and their circumstances are, but also made me realise that all the institutions share one critical thing – staff with huge passion for the collections they look after, work on and share with others. This is probably the most important factor in ensuring the success of not only the NSCF but also the long term survival of the collections.

So thank-you to everyone who has welcomed us into their institution and shared the collections and their knowledge with the Hub team. It has not only been important but also very inspiring.

We are looking forward to upcoming visits to the ARC-OVI collections and the Western Cape institutions in the next few weeks.

Michelle Hamer

Staying connected: #strongertogether #makingitcount #youarethenscf



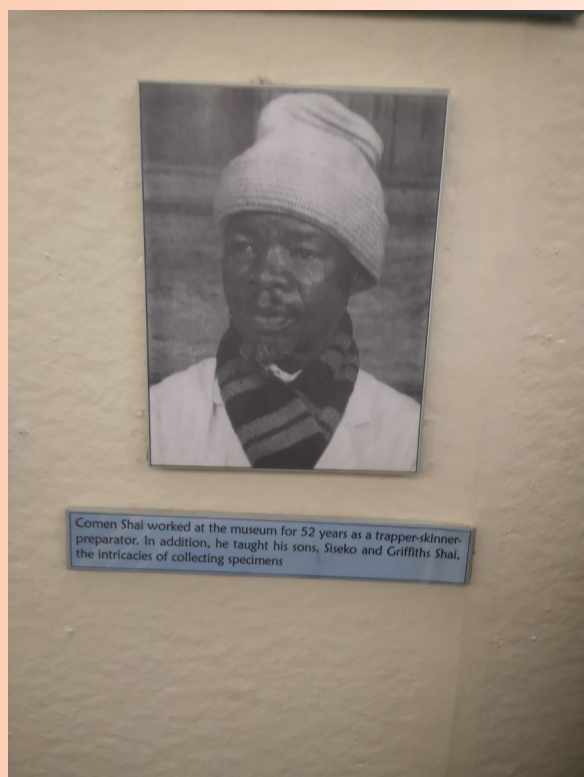
Mr Sifelani Jirah, Evolutionary Studies Institute, Wits



Dr David Allan, Durban Natural Science Museum



Dr Kirstin Williams, KZN Museum



Mr Girffiths Shai stands next to a photograph of his father, Comen Shai, who worked at Amathole Museum for 52 years as a trapper-skinner-preparator

Our social media accounts have proven to be very valuable in sharing news with the network. We have been documenting our visits to the institutions and wonderful interactions with the staff on our Facebook and Twitter accounts. Opportunities and vacancies are also posted online to these pages. Join the NSCF #strongertogether movement here:



Join the [NSCF Facebook Group](#)
Join the [NSCF Collections management working group page](#)



Collections management working group Twitter handle: @NscfMan

Links to some interesting reading

<https://www.museumfuernaturkunde.berlin/de/research/science-programmes/collection-development-and-biodiversity-discovery/zentrum>

With the establishment of the "Center for Integrative Biodiversity Discovery", the Museum of Natural History Berlin sets a new, future-oriented research focus. The goal of the center is the efficient discovery and exploration of global biodiversity. The center is an important contribution to capturing the millions of known and still unknown animal species, to exploring their importance to nature and its potential relevance to solving many of the problems that humanity currently faces.

<https://docs.google.com/document/d/1Ef0H0pwnjJW5B5thzp-Fs5J3qEomuJyEvkQd4hx-Lk/edit>

When zoological type specimens are lost: ICZN-compliant guidelines for when and when not to designate neotypes. Among the things that have arisen in the aftermath of the terrible fire this month in Brazil's Museu Nacional - a tragedy that affects many in the global scientific community - are numerous public comments regarding the loss of the thousands of holotype specimens housed in Rio, and how difficult it will be to replace them all.

<https://www.theverge.com/2018/9/5/17822562/google-dataset-search-service-scholar-scientific-journal-open-data-access>

Google's goal has always been to organize the world's information, and its first target was the commercial web. Now, it wants to do the same for the scientific community with a new search engine for datasets. The service, called **Dataset Search**, launched on 10 September.

<https://academic.oup.com/bioscience/article/65/6/543/304968>

When researchers take genetic resources—organisms, tissue, DNA—from another country, what **obligation are they under to share potential benefits**, if any, of their find with the country of origin? How about natural history museums that accept new specimens for their collections? According to the Nagoya Protocol (NP), collectors of genetic resources should share the benefits with the countries where the materials originate, which often are in poorer regions of the Southern Hemisphere. Although 59 parties have ratified this agreement, few of those affected by it in the museum, botanical garden, and collection communities in the United States have even heard of it.

Specimen Imaging Contracts

One of the objectives of the NSCF is the establishment of an online virtual museum that illustrates selected collection specimens for use by researchers and students globally. The NSCF is seeking a service provider to contribute to this project by photographing preserved selected animal and fossil specimens at Iziko Museum, P.E. Museum, Albany Museum, Ditsong Museum and Durban Natural Science Museum.

The bid documents and terms of reference for these contracts are available at <https://www.sanbi.org/opportunities/>

Closing Date: 12 October 2018